



PH 800.353.9595 FX 888.592.7878  
or hit dentalcity.com

# Infection Control

INFECTION CONTROL

## BARRIER FILM

### AllRap Kerr Totalcare

Extra tacky. Leaves no residue. 4" x 6".

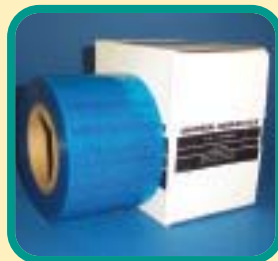
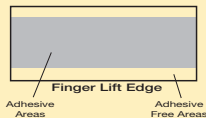
1200/roll . . . . . Blue	<b>50-269</b>	<b>\$21.99</b>
	Clear <b>50-270</b>	
Dispenser, 4" . . . . .	<b>50-353</b>	<b>\$38.99</b>



### Barrier Film Defend

Non-stick edge. Finger lift design.

4" x 6", 1200/roll . . . Blue	<b>33-353BL</b>	1-3 <b>\$16.49</b>
	Clear <b>33-353CL</b>	4+ <b>\$15.49</b>



### Cover-All Pinnacle/Kerr Totalcare

A plastic sheet with a unique adhesive. Can be easily placed on any surface, then removed without leaving any residue. Use on: X-ray controls/buttons, drawer handles, chair switches, telephone receivers, light handles, office communication panels, computer keyboards, delivery system handles, light curing handles, cavitrons & many more. Perforated. 4" x 6".

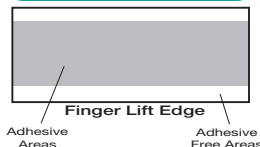
1200/roll . . . . . Blue	<b>50-252BL</b>	<b>\$20.99</b>
	Clear <b>50-252CL</b>	



### Finger Lift Edge Crosstex

The perfect solution for those hard to reach areas such as light handles, syringes and dental tubing. Easy to grasp for quick removal... Even when wearing gloves! Attractive dispenser package. 4" x 6".

1200/roll . . . . . Blue	<b>33-352</b>	<b>\$18.99</b>
	Clear <b>33-351</b>	



### Palco™ Barrier Film Palmero

Blue Bear on Clear, 4" x 6", 1200/roll . . . . .	<b>50-357</b>	<b>\$25.99</b>
4" x 6", 1200/roll . . . Mauve	<b>50-358</b>	<b>\$21.99</b>
	Green <b>50-359</b>	
4" x 6", 1200/roll . . . Blue	<b>50-351BL</b>	<b>\$19.99</b>
	Clear <b>50-351CL</b>	
2½" x 6", 1200/roll .Clear	<b>50-353CL</b>	<b>\$18.99</b>
6" x 9", 800/roll . . . . . Clear	<b>50-354</b>	<b>\$30.99</b>
12" x 14", 514/roll . . . Clear	<b>50-355</b>	<b>\$51.99</b>



## CHAIR COVERS

### Chair Covers Dental City

Half Chair Cover 27½" x 24", 250/roll . . . . .	<b>50-555</b>	<b>\$20.59</b>
Full Chair Cover 29" x 80", 125/roll . . . . .	<b>50-556</b>	<b>\$29.99</b>



### Chair Sleeve Pinnacle/Kerr Totalcare

The Chair Sleeve's tapered design protects the chair from infectious aerosol, minimizing time spent on cleaning.

27½" x 24", 225/roll (3800) . .	<b>50-266</b>	<b>\$35.99</b>
29" x 80", 125/roll (3850XL) . .	<b>50-264</b>	<b>\$39.99</b>
32" x 32", 200/roll (3825) . . .	<b>50-265</b>	<b>\$42.99</b>



### Slip-N-Grip® Kerr Totalcare

A disposable chair cover that will stay in place as the patient moves around. Eliminates headrest covers and use of disinfectants.

Full Chair, W: 48" x L: 56", 150/bx . . . . .	<b>50-268</b>	<b>\$44.99</b>
Half Chair/Stool Cover, W: 33" x L: 37", 125/bx . . . . .	<b>50-267</b>	<b>\$31.99</b>



ORDER TODAY - PH 800.353.9595 FX 888.592.7878 or hit dentalcity.com



# Infection Control

PH **800.353.9595** FX **888.592.7878**  
or [hit.dentalcity.com](http://hit.dentalcity.com)



INFECTION CONTROL

## HEADREST COVERS - PAPER

### Fabricel® Headrest Cover Tidi

Tissue/poly laminate. White. 500/case.

Small, 10" x 10" . . . . .	<b>36-161WH</b>	<b>\$49.99</b>
Regular, 10" x 13" . . . . .	<b>36-159WH</b>	<b>\$54.99</b>
Medium, 13" x 13" . . . . .	<b>36-160WH</b>	<b>\$69.99</b>
Large, 15" x 11½" . . . . .	<b>36-154</b>	<b>\$59.99</b>
Chayes/Virginia Size, 12" x 10" . . . . .	<b>36-301</b>	<b>\$54.99</b>



### Tissue/Poly Headrest Covers Defend

Soft tissue outside, poly backing helps prevent moisture soak-through to the headrest.

Small, 500/box, 10 x 10 . . . . .	<b>36-420SM</b>	<b>\$29.99</b>
Large, 500/box, 10 x 13 . . . . .	<b>36-420LG</b>	<b>\$34.99</b>



### Tissue/Poly Headrest Covers A.R. Medicom

Tissue outside, poly inside. 500/case.

Small, 10" x 10" . . . . .	Blue <b>36-404BL</b>	<b>\$30.99</b>
	Mauve <b>36-404MV</b>	
	Lavender <b>36-404LV</b>	
	White <b>36-404</b>	
Regular, 10" x 13" . . . . .	Blue <b>36-407BL</b>	<b>\$34.99</b>
	Mauve <b>36-407MV</b>	
	Lavender <b>36-407LV</b>	
	White <b>36-407</b>	



## HEADREST COVERS - ALL POLY

### All Poly Headrest Covers Dental City

Economical poly covers.

Clear, 10" x 10", 500/cs . . . . .	<b>36-252</b>	<b>\$16.99</b>
White, 10" x 13", 500/cs . . . . .	<b>36-153WH</b>	<b>\$28.99</b>
Clear, 10" x 13", 500/cs . . . . .	<b>36-251</b>	<b>\$17.29</b>
White, 13" x 13", 500/cs . . . . .	<b>36-152WH</b>	<b>\$22.99</b>
Clear, 11¼" x 10", 250/cs . . . . .	<b>36-149</b>	<b>\$10.99</b>
Clear, 9¼" x 14", 250/cs . . . . .	<b>36-150</b>	<b>\$9.99</b>
Clear, 9¼" x 11", 250/cs . . . . .	<b>36-148</b>	<b>\$10.99</b>
White, 9½" x 11", 250/cs . . . . .	<b>36-147WH</b>	<b>\$11.99</b>



## HEADREST COVERS - NON-WOVEN

### Non-Woven Headrest Covers Starryshine

Professional appearance. 250/box.

10" x 12" . . . . .	<b>36-400</b>	1-3 <b>\$17.99</b>
		4+ <b>\$15.99</b>
10" x 15" . . . . .	<b>36-401</b>	1-3 <b>\$17.99</b>
		4+ <b>\$15.99</b>



## KEYBOARD SLEEVES

### Keyboard Sleeves Dental City

Keyboard Sleeves 22" x 14", 250/bx . . . . .	<b>50-121</b>	<b>\$16.99</b>
LCD & Keyboard Sleeves 19" x 26", 250/bx . . . . .	<b>50-122</b>	<b>\$16.99</b>
LCD & Keyboard Sleeves 22" x 26", 250/bx . . . . .	<b>50-123</b>	<b>\$20.99</b>
Laptop Sleeves 15" x 22", 250/bx . . . . .	<b>50-124</b>	<b>\$19.99</b>



## LIGHT HANDLE COVERS

### Steri-Shield Latex Handle Covers Steri-Shield

C-Bar, 250/box (088022) . . . . .	Blue <b>33-312</b>	1-5 <b>\$22.99</b>
		6+ <b>\$20.99</b>
Multi-Use Barrier, 500/box (088058) . . . . .	Blue <b>33-313</b>	1-5 <b>\$32.99</b>
		6+ <b>\$29.99</b>
T-Bar Barrier, 250/box (088015) . . . . .	Blue <b>33-314</b>	1-5 <b>\$16.49</b>
		6+ <b>\$15.49</b>



### T-Handle Covers Dental City

5½" x 4", 500/box . . . . .	<b>50-502</b>	1-3 <b>\$16.49</b>
		4+ <b>\$14.99</b>



### T-Handle Light Sleeve Pinnacle/Kerr Totalcare

500/box (3600) . . . . .	<b>50-251</b>	1-3 <b>\$25.99</b>
		4+ <b>\$24.99</b>

